

LIGHT4

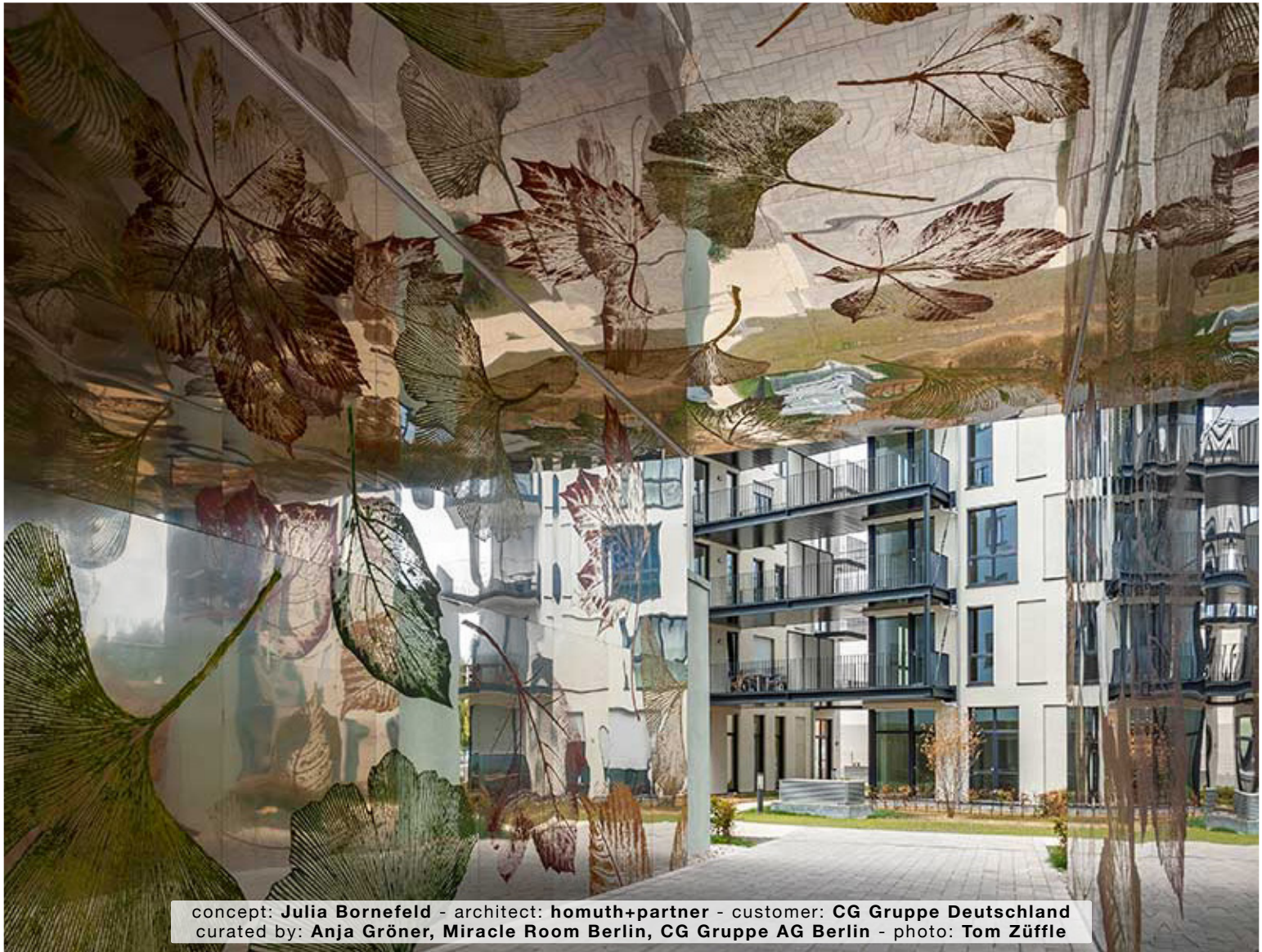


ARTIST JULIA BORNEFELD

PROJECT SCHUMANN'S GÄRTEN

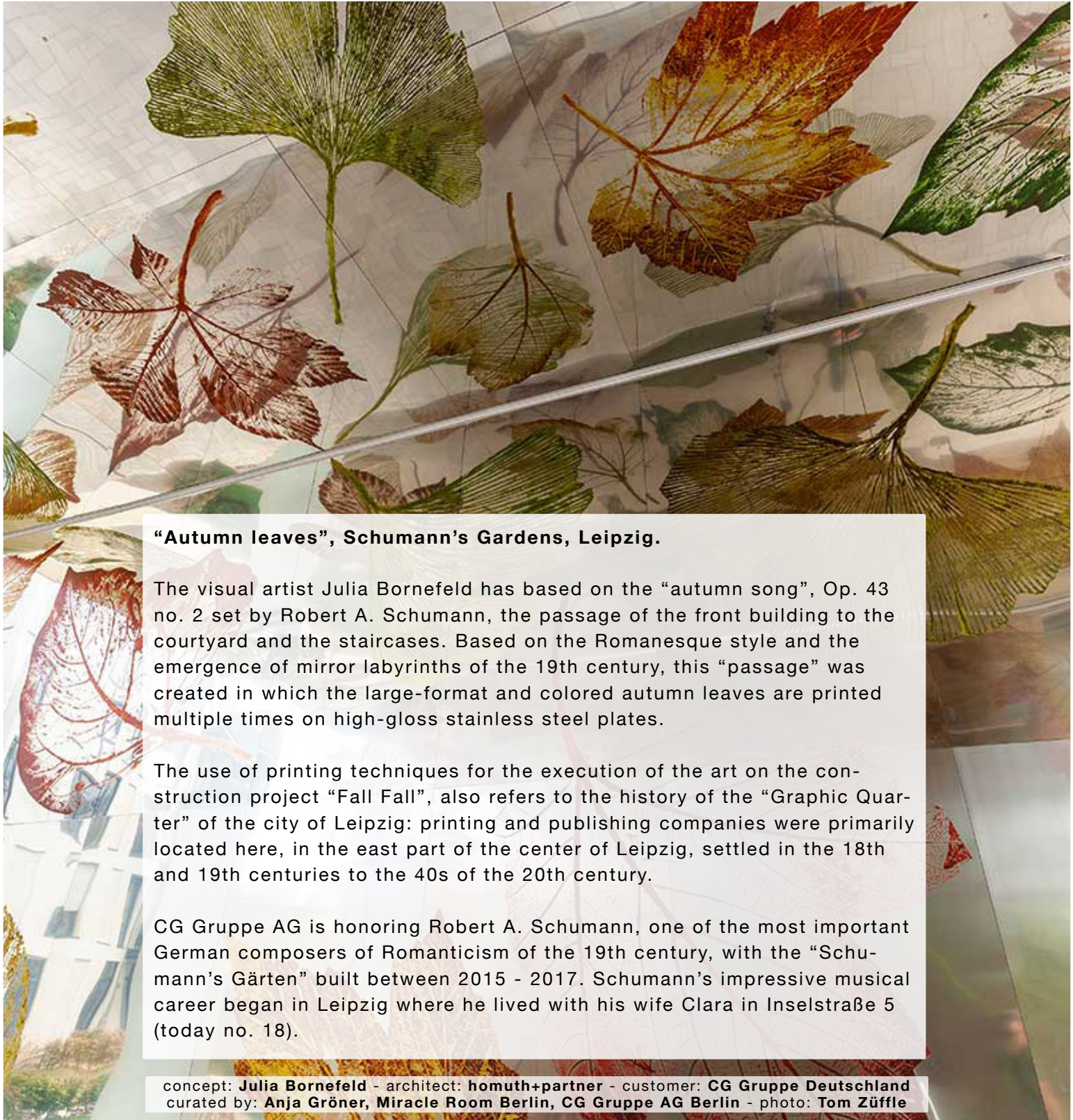
PLACE LEIPZIG - GERMANY

WHEN 2018



concept: Julia Bornefeld - architect: homuth+partner - customer: CG Gruppe Deutschland
curated by: Anja Gröner, Miracle Room Berlin, CG Gruppe AG Berlin - photo: Tom Züfle

LIGHT4



“Autumn leaves”, Schumann’s Gardens, Leipzig.

The visual artist Julia Bornefeld has based on the “autumn song”, Op. 43 no. 2 set by Robert A. Schumann, the passage of the front building to the courtyard and the staircases. Based on the Romanesque style and the emergence of mirror labyrinths of the 19th century, this “passage” was created in which the large-format and colored autumn leaves are printed multiple times on high-gloss stainless steel plates.

The use of printing techniques for the execution of the art on the construction project “Fall Fall”, also refers to the history of the “Graphic Quarter” of the city of Leipzig: printing and publishing companies were primarily located here, in the east part of the center of Leipzig, settled in the 18th and 19th centuries to the 40s of the 20th century.

CG Gruppe AG is honoring Robert A. Schumann, one of the most important German composers of Romanticism of the 19th century, with the “Schumann’s Gärten” built between 2015 - 2017. Schumann’s impressive musical career began in Leipzig where he lived with his wife Clara in Inselstraße 5 (today no. 18).

LIGHT4



concept: Julia Bornefeld - architect: homuth+partner - customer: CG Gruppe Deutschland
curated by: Anja Gröner, Miracle Room Berlin, CG Gruppe AG Berlin - photo: Tom Züfle

LIGHT4



concept: Julia Bornefeld - architect: homuth+partner - customer: CG Gruppe Deutschland
curated by: Anja Gröner, Miracle Room Berlin, CG Gruppe AG Berlin - photo: Tom Züfle

LIGHT4



concept: Julia Bornefeld - architect: homuth+partner - customer: CG Gruppe Deutschland
curated by: Anja Gröner, Miracle Room Berlin, CG Gruppe AG Berlin - photo: Tom Züfle